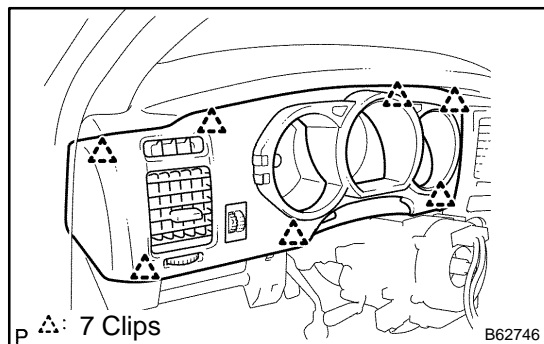


COMBINATION METER ASSY OVERHAUL

710C7-01

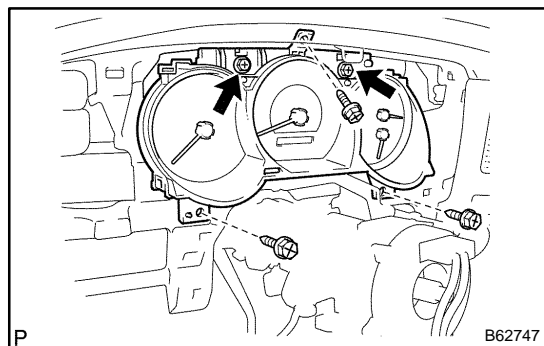
HINT:

COMPONENTS: See page 71-7



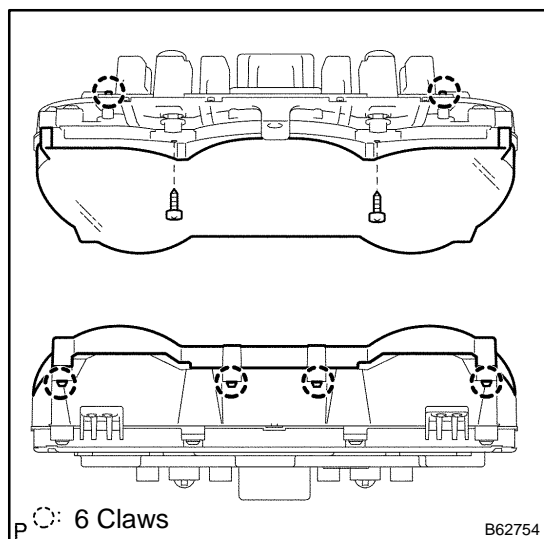
1. REMOVE INSTRUMENT CLUSTER FINISH PANEL SUB-ASSY

- (a) Disengage the 7 clips.
- (b) Disconnect the connectors and remove the instrument cluster finish panel sub-assy.



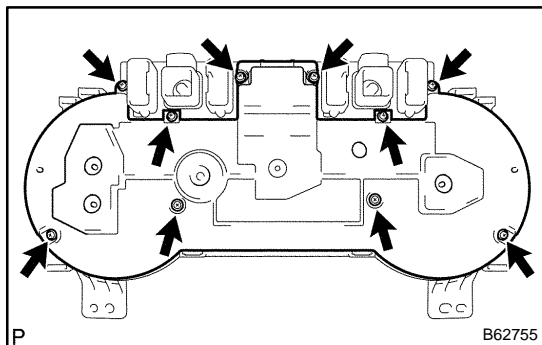
2. REMOVE COMBINATION METER ASSY

- (a) Remove the 3 screws.
- (b) Loosen the 2 bolts and remove the combination meter assy.



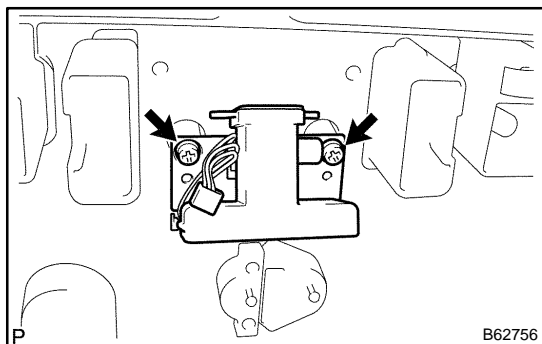
3. REMOVE SPEEDOMETER GLASS

- (a) Remove the 2 screws.
- (b) Disengage the 6 claws and remove the speedometer glass.



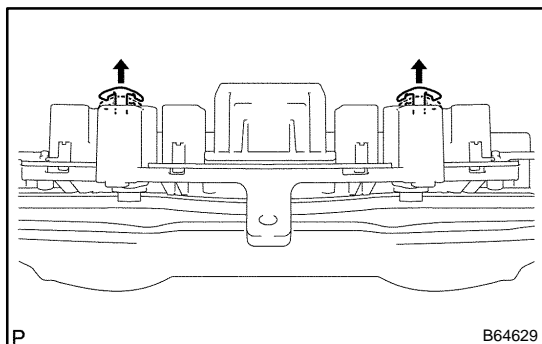
4. REMOVE COMBINATION METER COVER NO.1

- (a) Remove the 10 screws and combination meter cover No.1.



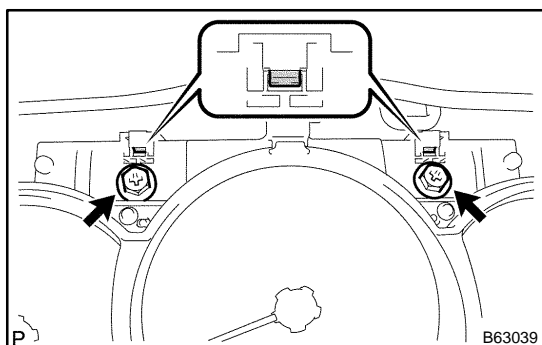
5. REMOVE INCLINATION SENSOR ASSY

- (a) Remove the 2 screws and inclination sensor assy.



6. INSTALL COMBINATION METER ASSY

- (a) Pull the positions shown in the illustration in the arrow mark direction to make the check pins unseen from the surface.



- (b) Check that the connector on the instrument panel side is in place.
 (c) Install the combination meter assy with the 3 screws.
 (d) Tighten the screw shown in the illustration and check that the check pin protrudes.

7. INCLINATION SENSOR 0° CORRECTION

NOTICE:

- When replacing or removing /installing the combination meter assy and inclination sensor assy, be sure to perform 0° correction of the inclination sensor.
- When performing 0° correction, install the combination meter assy and perform it in level surface.
- Also perform 0° correction when the body level setting is inclined because of vehicle height adjustment.

- (a) Turn the ignition switch off.

- (b) While pressing the odo/trip switch, turn the ignition switch on.

2003 4RUNNER REPAIR MANUAL (RM1001U)

- (c) Within 5 seconds after the ignition switch is turned on, repeat pressing and releasing the odo/trip switch 3 times and keep holding the last press for more than 5 seconds. (Buzzer sounds for a second)

NOTICE:

If the buzzer does not sound, perform this procedure from the first.

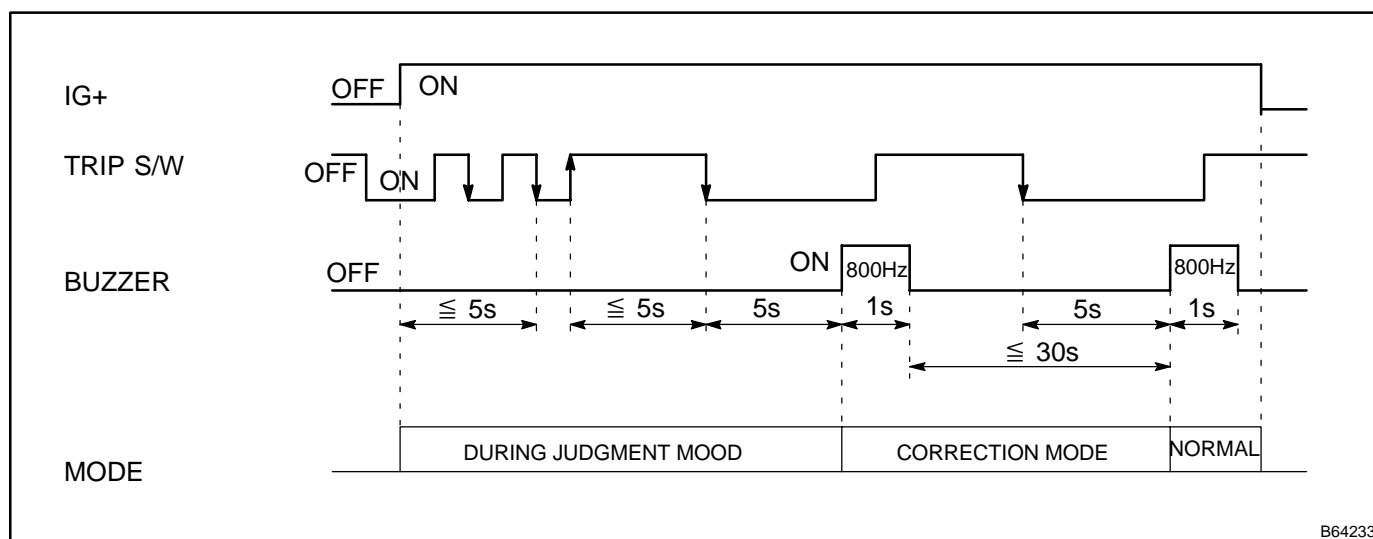
- (d) Release the odo/trip switch when buzzer sounds.
 (e) Press the odo/trip switch again and keep pressing for more than 5 seconds. (Buzzer sounds for a second again)

HINT:

- The buzzer sounds twice, reset operation is completed.
- The buzzer sound of the first and second time is same.

NOTICE:

If the buzzer does not sound or keep sounding for more than 1 second, perform the procedure from the first.



B64233